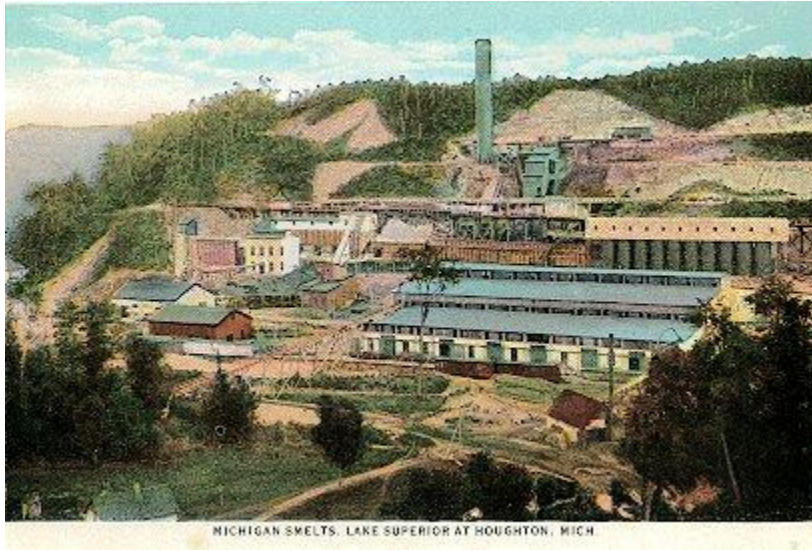


## Michigan Smelts.

**Michigan Smelter on Coles Creek. From an early postcard.** The Michigan Smelting Company was created in 1903 to handle the concentrate from the Atlantic, Trimountain, Champion, Mohawk, Wolverine, and Michigan stamp mills. The location was a steep hillside two miles west of Houghton near Coles Creek. The smelter was capable of producing 90 million pounds of refined copper per year.



Fire at Michigan Smelts 1940. By Bert DeVriendt on [pasty.com](http://pasty.com)

Henry Garnell shares on his 1977 WMPL Heritage line interview: There was a smelter company about 5 miles South from Oskar. It employed 200 men. It was started in 1903 to 1944.

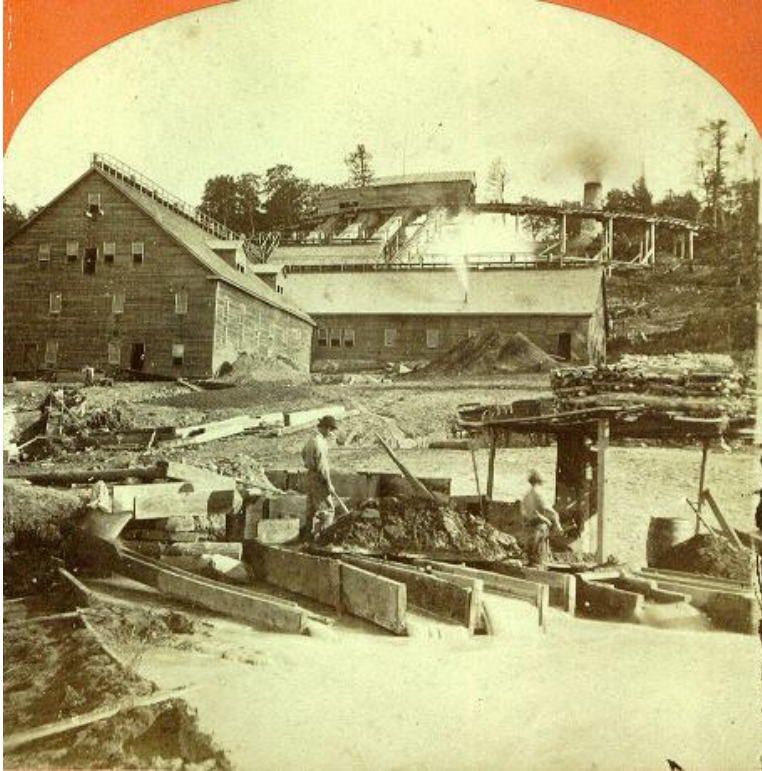
Clarence Monette in his booklet *Some Copper Country Names and Places* shares: Michigan Smelts was at the mouth of Cowle's Creek 3 miles west of Houghton. The plant was completely terraced and built along gravity lines. It was this that saved the firm thousands of dollars each year. Coal for the smelter was hoisted by three rigs which were mounted on high trestles on the Copper Range dock.

The Smelts was organized in 1903 and belonged to Champion, Trimountain, Baltic, Mohawk, Wolverine, and Atlantic Mining Companies. It was designed by Frank Klepetko and was considered the largest and most modern smelter in the Lake Superior

District. It had 6 furnaces - one was 16 x 40 feet, two were 16 x 36 feet, two 14 x 23 feet, and one 15 x 18 feet. Steel cars were used in conveying the mineral from the mills to the smelter and they discharged their contents into large steel bins which were on the high bluff back of the smelter on the main line of the Copper Range Railroad.

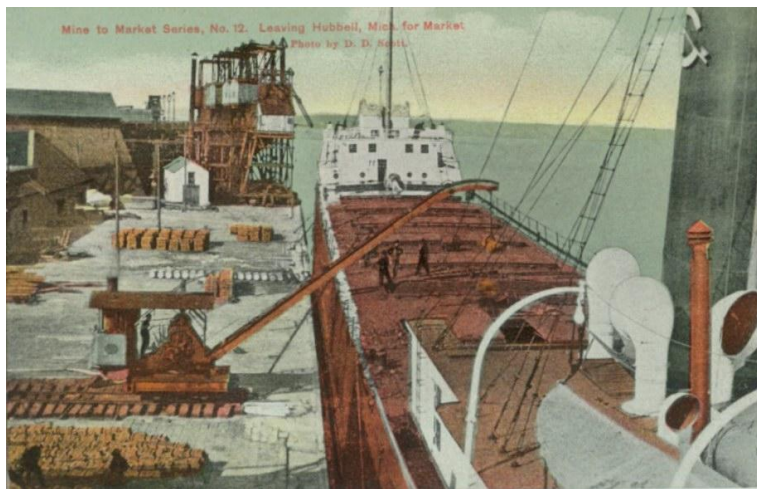
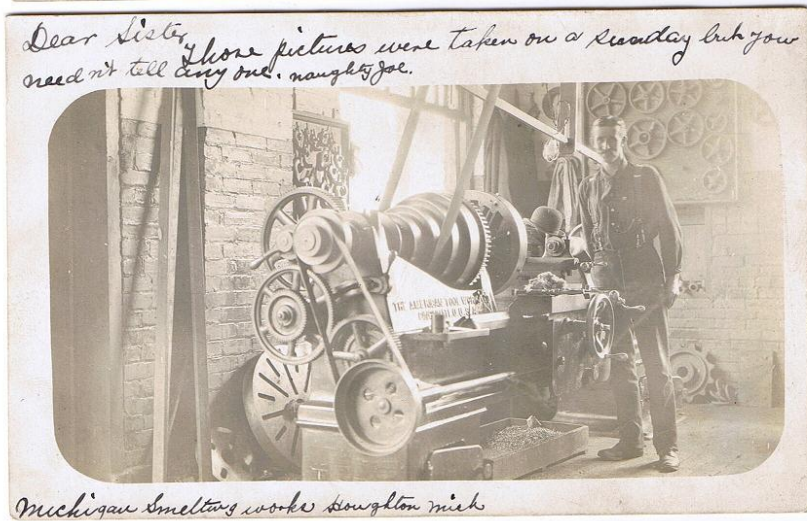
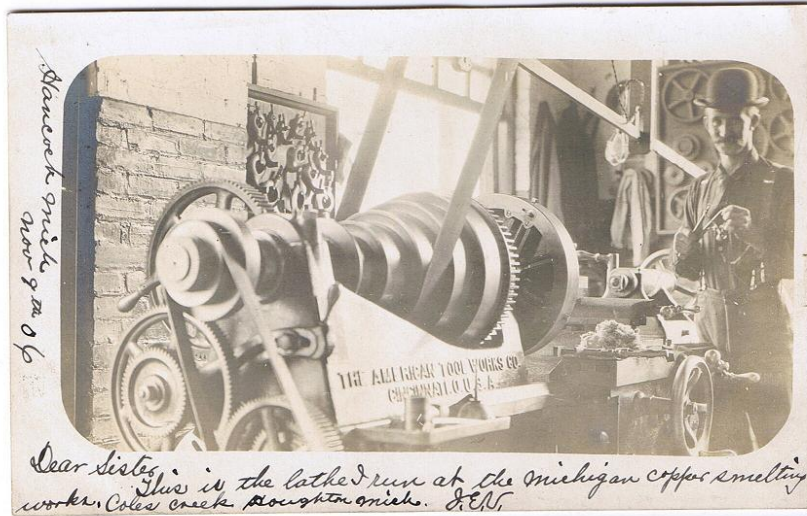
The Smelts closed in 1945.

See 1910 census for names of workers in the Smelts.



Machine Shop at

Michigan Smelts.



Barb Koski welcomes more information on "The Smelts". Contact the web master.

Researched by Barb Koski. Osma Plat Road. Houghton MI 49931. Submitted in 2011.