

Clarence Monette in his book *Some Copper Country Names and Places* shares:

Beacon Hill.

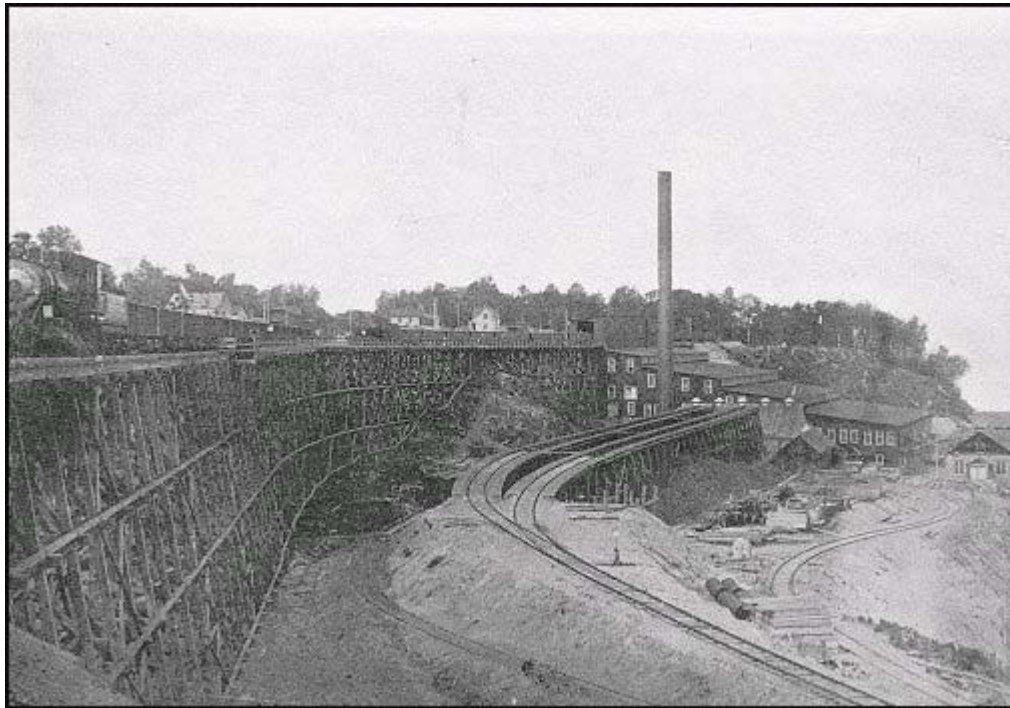
This settlement on Lake Superior was the center of the 100 acre Trimountain Mining Company site in 1905. It was financed by Boston capital and got its name from the fashionable district in Boston at that time. It is said that the name was given with part humor as actually, Beacon Hill never was a fastidious or fashionable community.

It is located between Freda and Redridge, on the slope above the stamp mill and had a number of buildings. The Stamp Mill burned March 16, 1916. The employees were transferred to Redridge or Freda Stamp Mills.

This community had a Catholic Church, General Store, Public School (with Freda located between the communities), and a boarding house. It had more than 100 company provided homes. The small company provided a hospital and a nurse's house. The water system had 10 inch mains for both domestic use and fire protection.

The Copper Range Railroad tracks connected the community, mine and mill with Houghton and the high school at Painesdale (school train).

The townsite and main buildings were supplied with electricity from a dynamo in the engine-room at the mill.



Trimountain Stamp Mill in Beacon Hill

Compiled by Barb Koski, Osma Plat Road, Houghton, MI
More information is desired. Contact the Webmaster.