

Schmidt's Corner Area.

A glimpse at the local news of 50 years ago

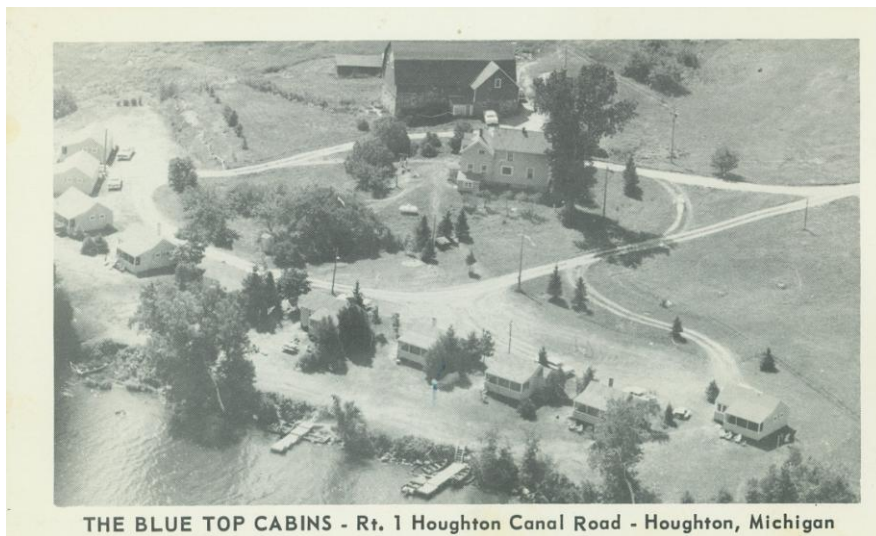
Yr. 1911



SUNDAY RIDE TO OSKAL CANAL

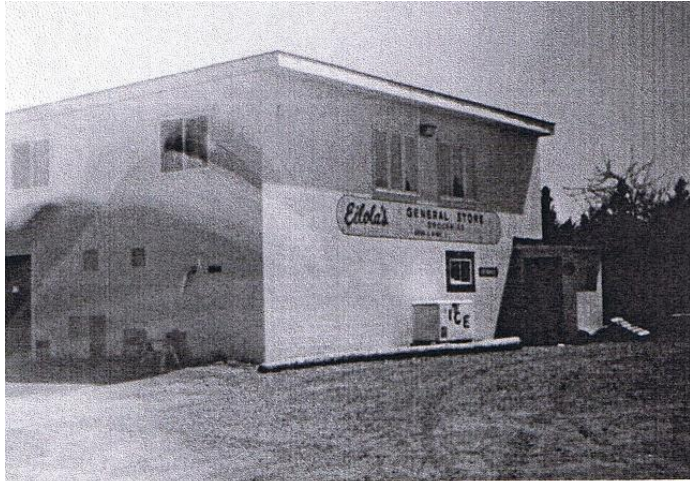
THE YEAR is 1911 and the auto, a Franklin, is being driven on a Sunday in summer to Oskar and the Houghton Canal countryside. Theodore Otto, of Hancock, left, is the owner and driver and Karl Schmidt of Oskar, the passenger. Carbide gas provided the source of illumination for the auto's headlights. The steering wheel is located on the right. Otto was a teamster for the Schuermann Brewery and Schmidt a dairy farmer in Oskar. Schmidt's Corner was named after him. (Ernie Schmidt contribution to the Bill Brinkman files.)

From Richard Garnell Collection Karl and Otto Schmidt.. corner named after Otto Dairy Farmer.





Stanton Horseshoe Team



Page 3B, Wed, July 8, 1981, PMG



Like grandfather, like grandson

TIM EILOLA and wife, Carrie, have established a general merchandise store at Schmidt's Corner, similar to what his grandfather did at the turn of the century. Frank Eilola built up a very thriving general store in east Hancock near Santori's Corner where he delivered

and sold merchandise that was dispensed by horse and wagon. Frank also had his store replenished by freight from the railroad lines. Tim, in contrast, is supplied by motor truck and sells to the motor trade whose automobiles stop to pick up supplies.



When the Houghton Canal Road went east of the Schmidt's Corner Bar.

Area photos compiled by Barb Koski, Osma Plat Road, Houghton MI 49931 in 2009.